

Body: EN-GJS-400-18-LT (GGG-40.3), three way form for heat transfer oil

Pressure range: PN 16, PN 25

Immersion length acc. to DIN EN 558, basic series 1

Flanges acc. to DIN EN 1092-2 type 21

Spindle sealing: double wall bellow

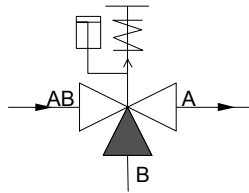
and safety stuffing box

Internal parts: stainless steel, replaceable seat rings

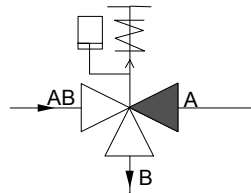
Leakage: < 0,01% Kvs

Function:

Operating state



State after the release



The quick change-over valve is a 3-way valve complete with mechanical actuator. In operation, the valve cone is in the lower end position (see diagram above), the straightway AB-A is opened and the bypass AB-B is closed (leakage < 0.01% kvs). This is achieved manually. The clamp lever included in the supply is used to move the toggle clamp downwards until it clicks into place (via the knee point). In so doing, the restoring spring is pretensioned. The switch signals that the valve has reached its end position (see below for switch data, other types of switches on request). The change-over trip is undertaken by connecting a pneumatic or hydraulic pulse (3 bar) to the cylinder. The cylinder piston forces the toggle clamp lever out of the clicked-in position; the restoring spring moves the valve cone into the upper end position. The straightway AB-A is closed (leakage < 0.01% kvs) and the bypass AB-B is opened (see diagram above).

The valve can also be used as a 2-way quick stop valve, if the bypass B is closed with a blind flange.

Under tension, the tripping zone of the toggle clamp is to be kept clear of access by using suitable protection devices or barriers (risk of injury from the lever kicking back)

Accessories, special types:

- Add. limit switches (on request)
- Manual release device (on request)
- Other Kvs- values (on request)
- Weld-on ends (on request)
- Flange drillings acc. to ANSI / JIS (on request)

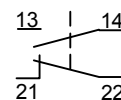
Order text:

Quick change-over valve in 3-way form
EN-GJS-400-18-LT (GGG-40.3), PN . . . , DN . . . , Kvs . . .
Spindle sealing with bellow
List-No. 6061 . . . , accessories: . . .

Switch data:

- Switching element: 1 normally closed / 1 normally open contacts, positive break normally closed contact
- Switching system: Snap action
- Electrical loading: 400 VAC, 6 A, (AC13)
- Minimum loading: 24 V, 10 mA
- Protection class: IP 65 acc. to EN 60529
- Temp. range: -20 °C to 80 °C

Circuit diagramm:

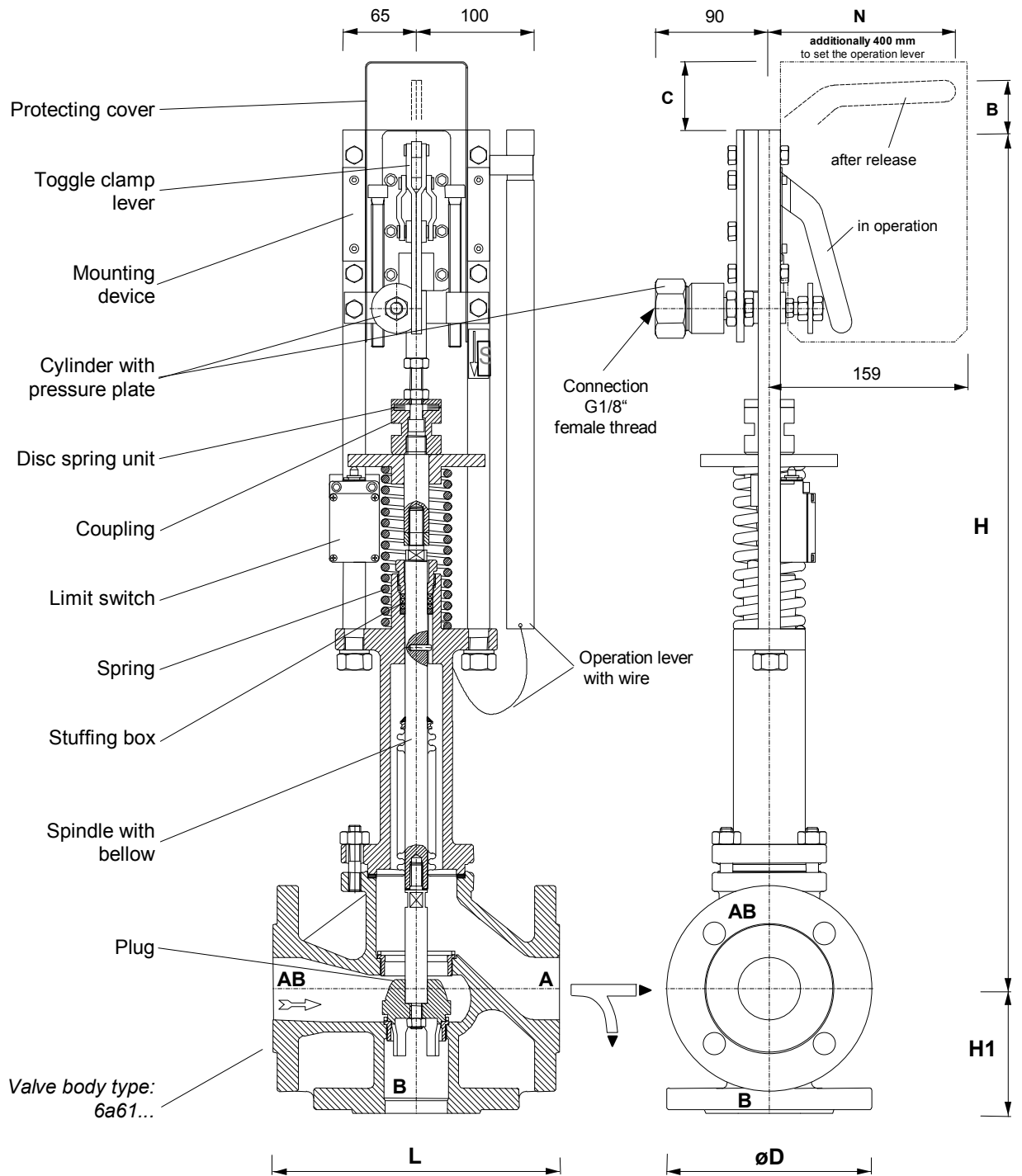


Pressure-temperature ratings acc. to DIN EN 1092-2:

by:	-10...120	150	200	250	300	350	°C
PN 16	16	15,5	14,7	13,9	12,8	11,2	bar
PN 25	25	24,3	23	21,8	20	17,5	bar

DN	List-No.		Kvs m³/h	Stroke mm	Max. pressures	
	PN 16	PN 25			differential bar	working bar (g)
15	6061 400	6061 500	4,0	20	25,0	25,0
20	6061 401	6061 501	6,3	20	25,0	25,0
25	6061 402	6061 502	10	20	25,0	25,0
32	6061 403	6061 503	16	20	16,0	26,0
40	6061 404	6061 504	25	20	11,0	17,0
50	6061 405	6061 505	40	20	7,0	8,0
65	6061 406	6061 506	63	30	5,0	6,0
80	6061 408	6061 508	100	30	3,0	4,0
100	6061 410	6061 510	160	30	2,0	3,0
125	6061 412	6061 512	230	35	1,0	2,0
150	6061 415		330	38	0,7	1,7





DN	15	20	25	32	40	50	65	80	100	125	150
Height H	666	680	674	681	686	689	819	819	827	929	944
Stud length H1	65	70	75	80	90	100	120	130	150	200	210
Length L	130	150	160	180	200	230	290	310	350	400	480
Flange øD	95	105	115	140	150	165	185	200	235	270	300
B	25	25	25	25	25	25	55	55	55	85	105
C	55	55	55	55	55	55	96	96	96	96	96
N	155	155	155	155	155	155	150	150	150	145	130
Weight kg	18	19	20	22	24	27	46	50	63	118	139