

Technical data:

Input signal:	3-point-step signal
Supply:	230V / 50Hz, alternatively: 24V / 50Hz, 24V DC
Electrical connection:	Connector acc. to DIN EN 175301-803-C
Connecting cable:	ø4,5-6 mm / max. 0,75 mm ²
Compressed air supply:	Class 3 acc. to ISO 8573-1
Air pressure:	1,4...6 bar (20...90 psi)
Output signal:	0...100% air pressure
Air connection:	G 1/4"
Protecting class:	IP65 acc. to DIN EN 60529



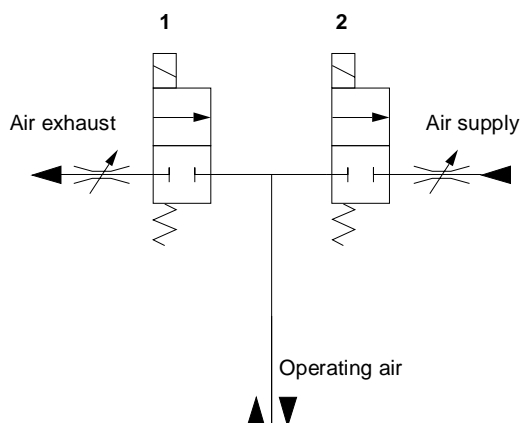
Function:

The electro-pneumatic converter is a connecting element between controller and pneumatic control valve.

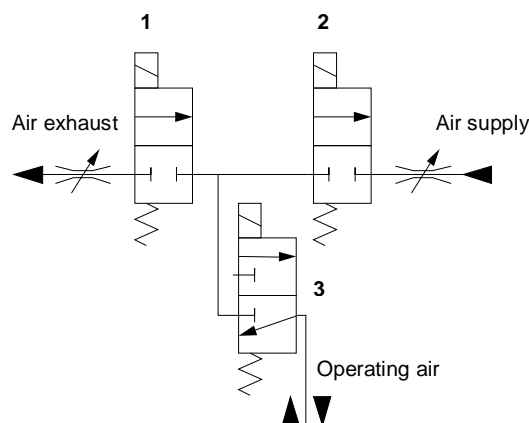
It creates a control signal from "+"- or "- " impulse of 3-point-step controller and from available compressed air.

Voltage application on exhaust solenoid valve 1 effects de-aeration of the pneumatic actuator, voltage application on supply solenoid valve 2 effects aeration of the pneumatic actuator. For proper functioning of converter with quick-exhaust function, it is necessary to apply voltage also on solenoid valve 3. Voltage interruption on this valve activates the quick-exhaust function: de-aerating of the pneumatic actuator.

The pneumatic output signal depends on the supply air pressure and must not be higher than the maximum permissible pressure of the actuator. The flow rate of the supply and exhaust air can be modified with throttling valves, therefore it is possible to adjust the positioning time of the pneumatic actuator if necessary.



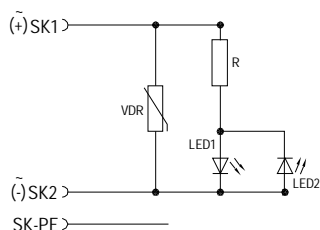
Type 390 360.*
without quick-exhaust function



Type 390 365.*
with quick-exhaust function

* = All solenoid valves are shown currentless

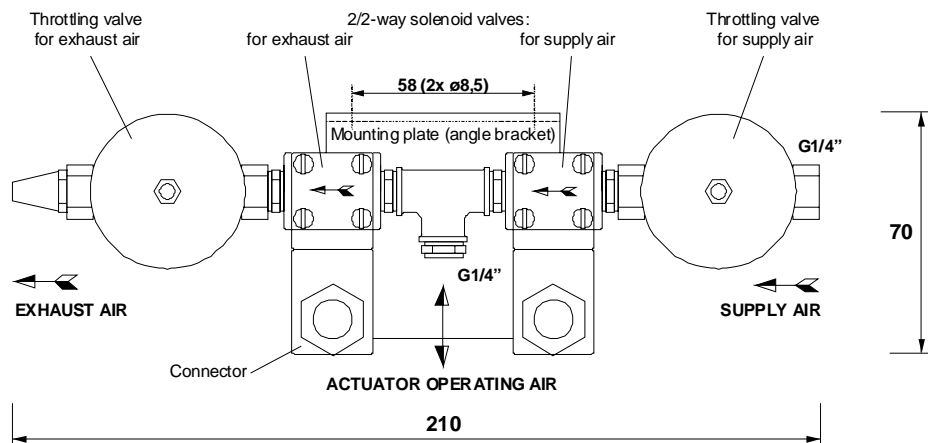
Electrical wiring - connector:



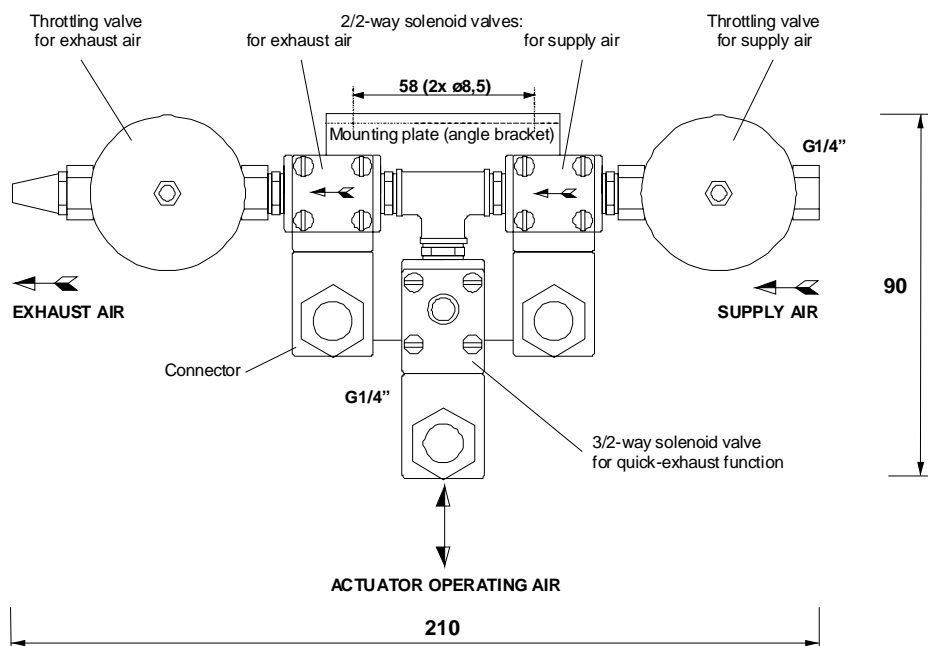
Types overview**:

		List- No.
230V / 50 Hz	without quick-exhaust function	390 360
24 V / 50 Hz	without quick-exhaust function	390 3602
24V DC	without quick-exhaust function	390 3608
230V / 50 Hz	with quick-exhaust function	390 365
24 V / 50 Hz	with quick-exhaust function	390 3652
24V DC	with quick-exhaust function	390 3658

** Ex-type of solenoid valves on request



Type 390360. without quick-exhaust function



Type 390365. with quick-exhaust function